

سیدار
SEDAR

Since 1892

YOUR
SPACE.
YOUR
ART.



MOTORIZED RAIL SYSTEM®
RB 16-14 Roller Jumbo Cassette

Table of Contents

System Introduction	3
System Description	4
Basic Technical Information	5
Use Cases	6
Features and Benefits	11
Options	13
Showcase	
Other Relevant Documents	15
Contact Information	16
About Sedar	17
Highlights of our Completed Projects	18

System Introduction

Explore the **RB 16-14 Roller Jumbo Cassette Motorized Rail System®** through this brochure filled with images that showcase the system's features and demonstrates its adaptability across multiple environments.

This brochure serves as a fantastic resource for picturing the transformative impact of the system on various spaces, emphasizing its design flexibility.



Alongside the brochure, we provide additional documents designed to meet the specific needs of professionals. These important resources can be accessed by following the links provided or scanning the QR codes below:



[16-14 Documents](#)



[Roller Blinds Fabric
Specifications](#)

System Description

It's time to elevate spaces and give them a sophisticated upgrade with **Sedar RB 16-14 Roller Jumbo Cassette Motorized Rail System®**, perfect for any setting from homes to large commercial venues. It features a durable **40mm pipe** with a **jumbo cassette** that shields the mechanism from dust damage, **reducing maintenance** and **extending system life**.

This system is **remote controlled** and **automation compatible** powered by **Somfy Sonesse® 30 Radio Technology Somfy (RTS)** that allows for wireless radio control of motorized window covering.



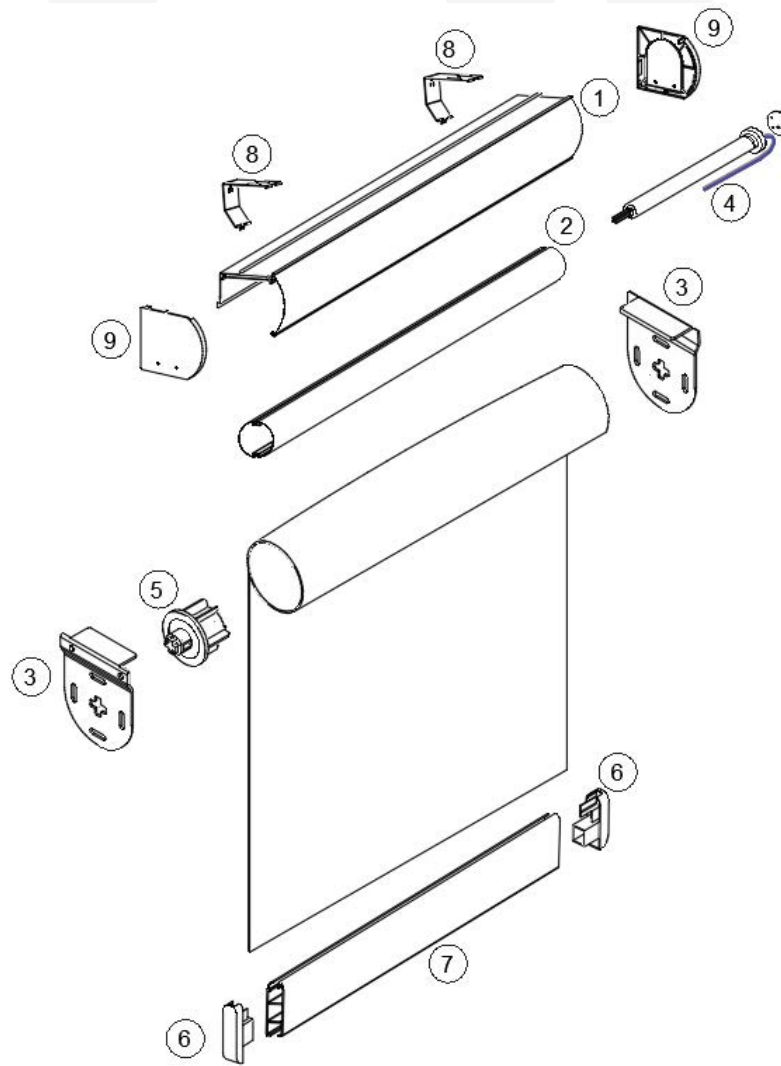
This system offers a **vast selection of fabric choices** tailored to enhance both the look and functionality of your interiors.

It comes with **generous warranties**, offering different coverage for different fabric types and 5-year for the system and the motor.

It is a reliable, versatile choice with superior **design flexibility** and **easy installation** across various surfaces offering **custom-printed blinds** for a personal touch.



Basic Technical Information



PARTS	DESCRIPTION
1	16-14 Jumbo Cassette
2	Roller Blinds 40mm Tube - Aluminum
3	Bracket for RB 16-14 System - White (Inside cassette)
4	Somfy Sonesse® 30 RTS Motor
5	RB 16-14 End Plug - White
6	Bottom Rail End Cap - White
7	Powder Coated Bottom Rail - White
8	L clip brackets
9	Cassette cover system plastic one set (2 pcs)

System

Roller Jumbo Cassette
System (16-14)

Operation

Remote Controlled and
Automation Compatible

Useful Information

Valance - Jumbo Cassette,
Optional Side Channel



Use Cases

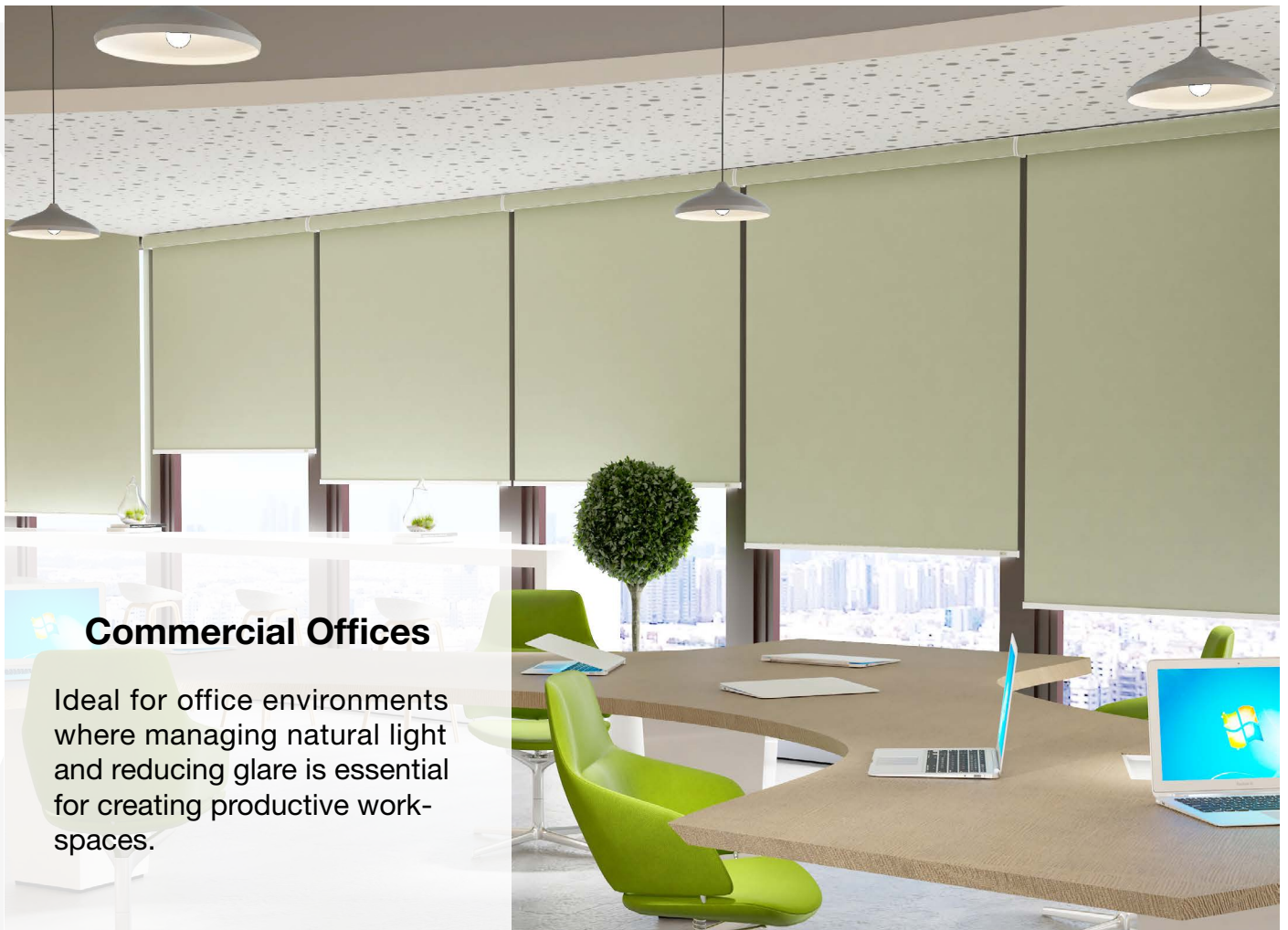
The **RB 16-14 Roller Jumbo Cassette Motorized Rail System**[®] offers a flexible and cutting edge approach, tailored to cater to the evolving requirements of contemporary interior designers and architects.

This system is ideally suited for a variety of applications, including:



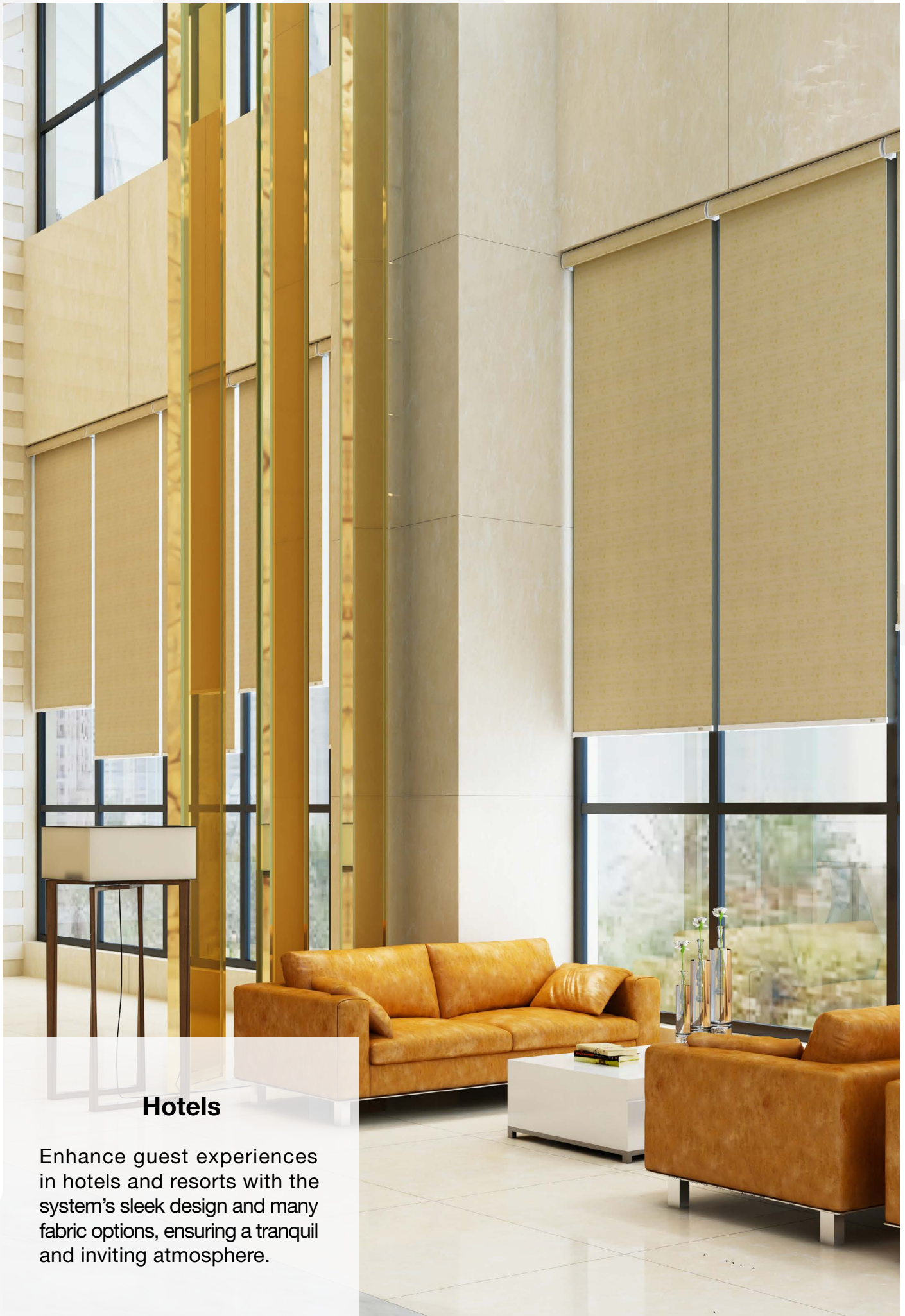
Residential Spaces

Elevate the ambiance of luxury homes with customizable light control and privacy settings ensuring a perfect blend of comfort and style.



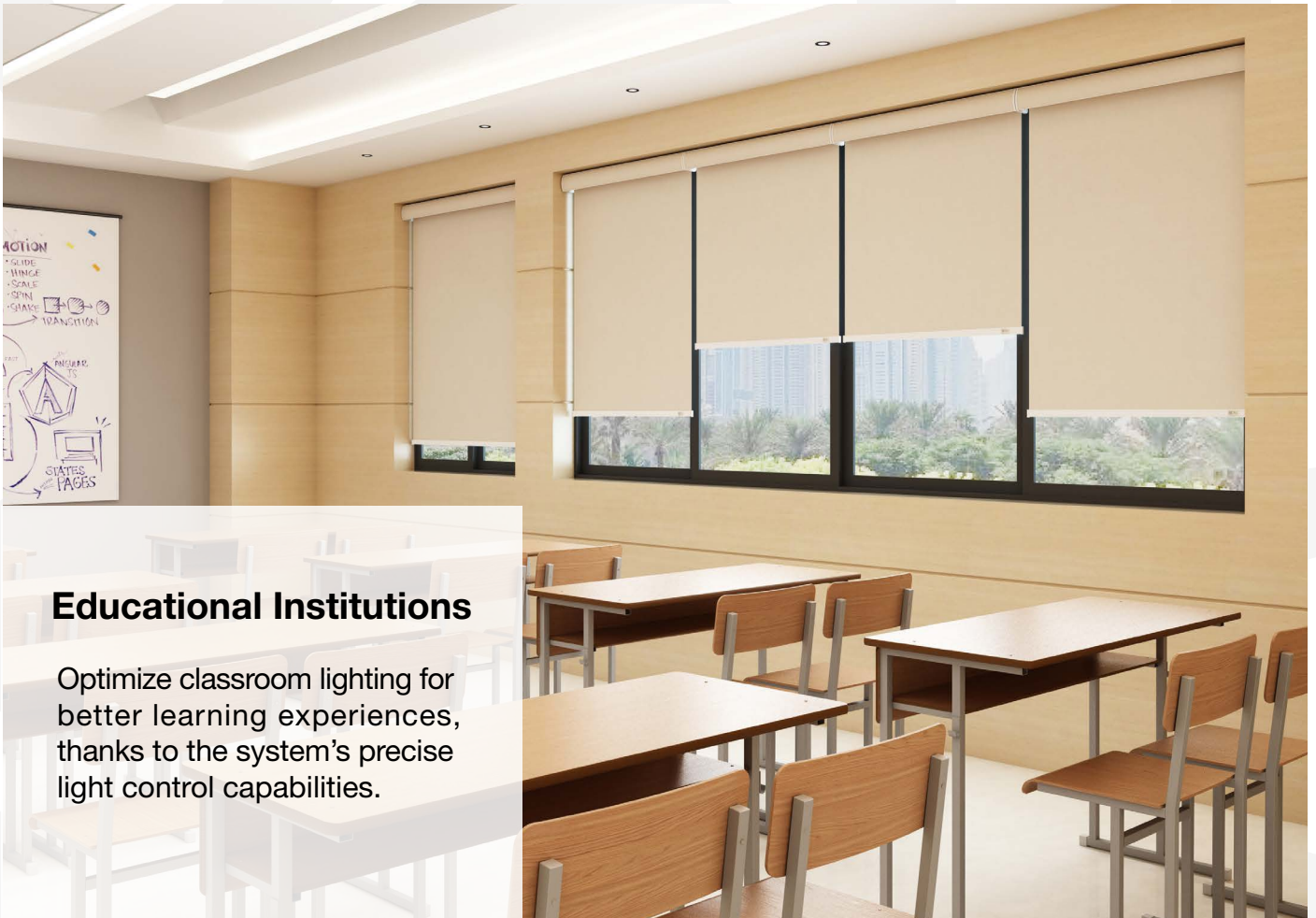
Commercial Offices

Ideal for office environments where managing natural light and reducing glare is essential for creating productive work-spaces.



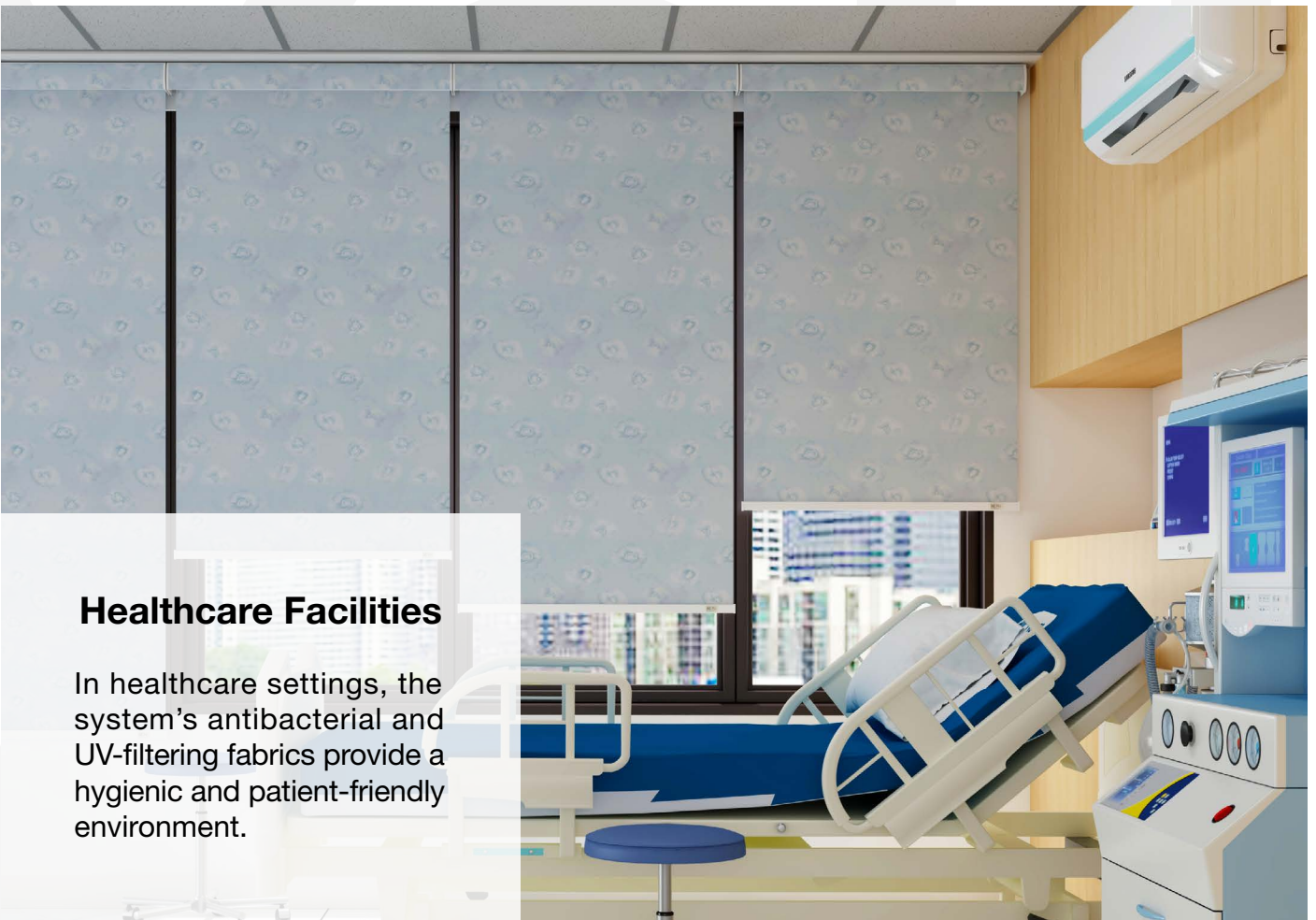
Hotels

Enhance guest experiences in hotels and resorts with the system's sleek design and many fabric options, ensuring a tranquil and inviting atmosphere.



Educational Institutions

Optimize classroom lighting for better learning experiences, thanks to the system's precise light control capabilities.



Healthcare Facilities

In healthcare settings, the system's antibacterial and UV-filtering fabrics provide a hygienic and patient-friendly environment.



Commercial Retail and Showrooms

Showcase merchandise in the best light while protecting it from UV damage, a key consideration for high-value items.

The **RB 16-14 Roller Jumbo Cassette Motorized Rail System**[®] is not just a window treatment; it's a design statement that speaks to functionality, aesthetic elegance, and environmental consciousness. It's a vital tool for professionals aiming to create spaces that are not only visually stunning but also comfortable and practical for their users

Features & Benefits

Mechanical Characteristics

- Closed system design keeps internal components protected and maintenance-free.
- Narrow edge light gap to reduce light entry.
- Fabric area capable of covering up to its system capacity of 6.5 m².
- Compatible with a variety of surfaces for installation, including concrete, wood, reinforced gypsum, and metal.
- Jumbo cassette that shields the mechanism from dust and damage, reducing maintenance, and extending system life.
- Remote controlled and automation compatible powered by **Sonesse® 30** that allows for wireless radio control of motorized window covering.



Fabric Qualities

- **Fire Safety:** The fabric choices include fire-retardant options for increased safety.
- **Light and UV Control:** The fabric range varies from regular to blackout, addressing different light and UV protection needs.
- **Eco-friendly Materials:** Our commitment to the environment is evident in our use of recyclable and sustainable materials.





Aesthetic Elements

- The system offers personalized printing for tailored designs, ensuring a sleek, modern look that seamlessly integrates with any interior decor.
- Consistency in design is maintained across various applications to enhance the overall aesthetic appeal.

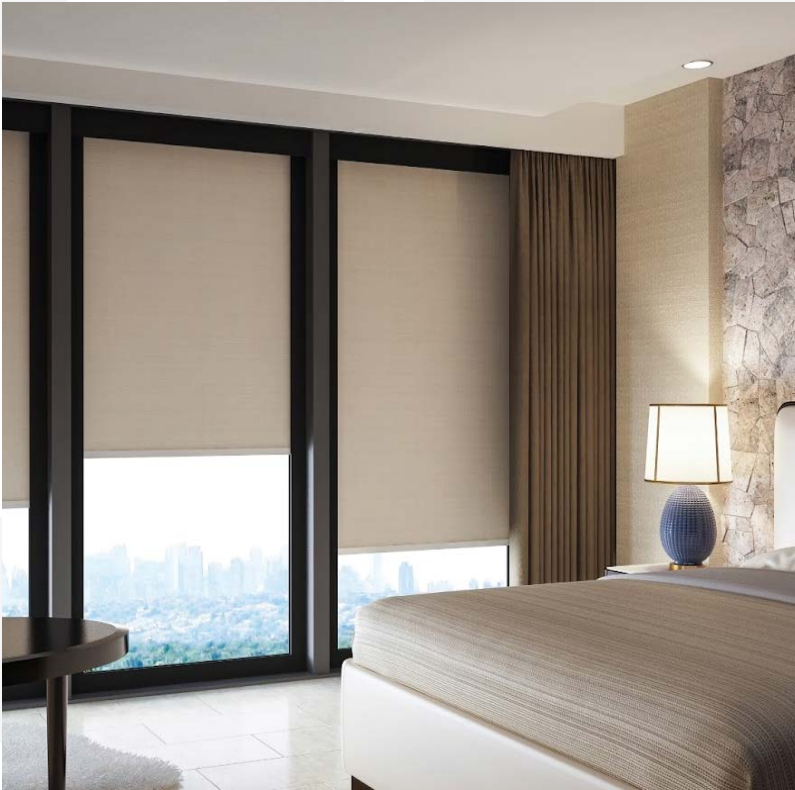
Warranty and Assurance

- Different coverage for different fabric types.
- 5-years warranty for this system and the motor.



Each feature of **RB 16-14 Roller Jumbo Cassette Motorized Rail System®** not only meets but exceeds expectations in functionality, safety, and style.

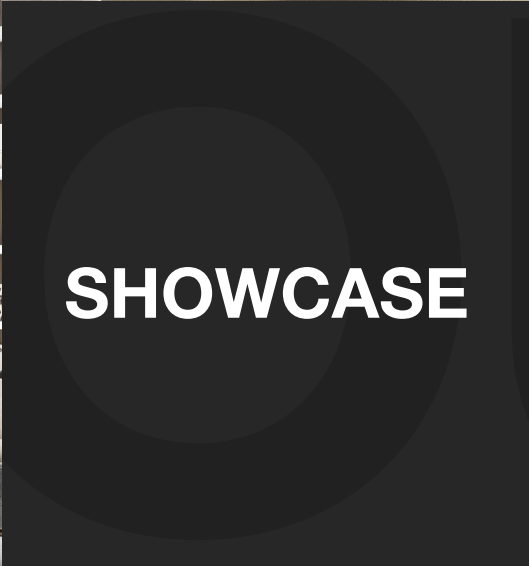
Side Channel Options



Discover the unparalleled elegance and functionality of the **RB 16-14 Roller Jumbo Cassette Motorized Rail System®** with Side Channel option, meticulously crafted for the modern space.



Side channels help eliminate gaps to block out light and increase privacy, While also stabilizing the blinds to prevent swaying. These channels are mounted along the window frame for a seamless and aesthetics integration.



SEDARGLOBAL BROCHURE

Other Relevant Documents

To further explore the **RB 16-14 Roller Jumbo Cassette Motorized Rail System®**, please click the links below or scan the QR codes.

These will direct you to additional documents designed to meet your specific needs.



[16-14 Documents](#)

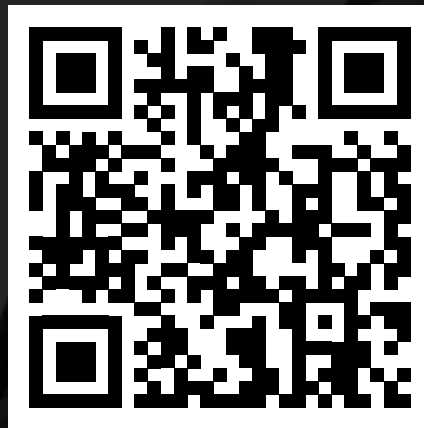


[Roller Blinds Fabric Specifications](#)

Projects and Professionals

Contact Information

For inquiries about the **RB 16-14 Roller Jumbo Cassette Motorized Rail System®** or to utilize our Projects Department's bespoke services, please contact us. Our team is ready to assist with product details, installation, and custom solutions, ensuring your design needs are expertly met. Contact us using the QR code below for guidance in transforming your spaces with innovation and style.



Email: projects@sedarglobal.com

Contact or call our hotline on

WhatsApp: [+971502313453](https://wa.me/971502313453)



About Sedar

Sedar Global is a leading home decor business around the MENA region. We provide a wide range of window treatment & wallpaper solutions, as well as folding doors, soft furnishing, smart solutions, outdoor solutions & more.

We are a fourth generation family business with our roots going back to 1892. Our long lasting ethics and principles have enriched the Sedar business with deep family values.

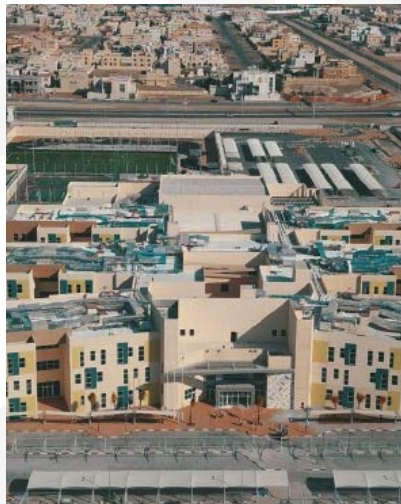
We operate as a single, international, trust-worthy brand with a culture oriented on exceeding every customer expectation. We have 3 factories, and over 30+ outlets in UAE, Saudi Arabia, Qatar, Oman and Bahrain.

Highlights of our Completed Projects

Here are some highlights of our completed projects, illustrating our extensive reach and expertise. These projects showcase our ability to deliver quality and excellence across various sectors, including aviation, hospitality, healthcare, corporate, residential, and industrial.



Abu Dhabi Investment Authority - Abu Dhabi



300+ Government Schools, Musanada - Abu Dhabi



Islamic Bank - Sharjah



Paramount Towers Damac - Dubai



Burj Al Arab - Dubai



Etisalat Tower - Dubai



Emirates Airlines Headquarters - Dubai



Dr. Sulaiman Al Habib Hospital - Dubai



One Za'abeel Ithra - Dubai



Jumeirah Beach Hotel - Dubai



Kempinski Residences - Dubai



Nakheel Island - Dubai



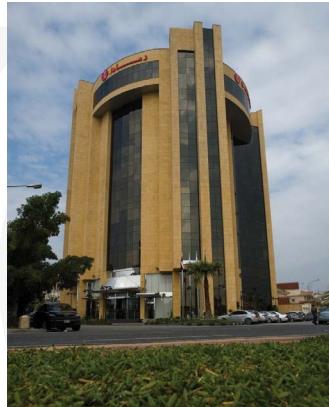
Raffles The Palm Resort - Dubai



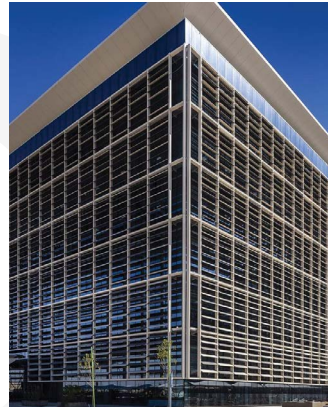
Almoosa Specialist Hospital, Ehsaa - KSA



Movenpick Hotel Al Khobar - KSA



Ramada Al Khobar - KSA



Saudi Electricity Company - KSA



Holiday Inn Al Khobar - KSA



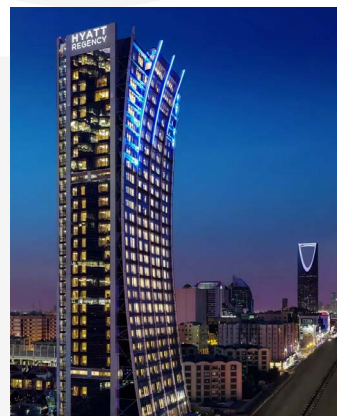
JW Marriott Hotel - Qatar



Ministry of Justice - Riyadh



Ministry of Health - Riyadh



Hyatt Regency - Riyadh

SEDAR BROCHURE



Qatar National Bank



Swiss Hotel Doha - Qatar



Muscat Securities Market - Oman



Nissan Showroom - Oman



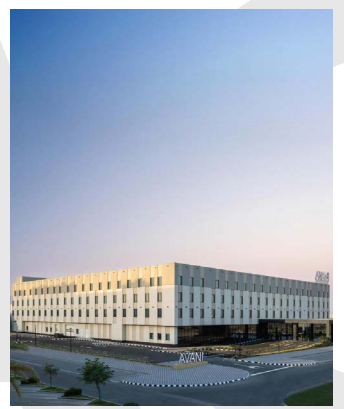
Oman Tel - Oman



Salalah Airport - Oman



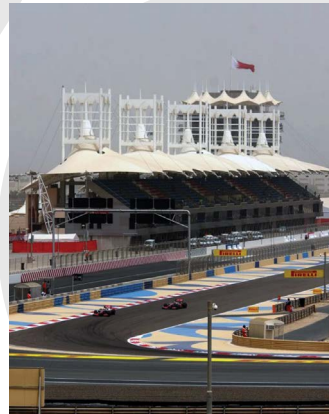
Ghala Heights Mixed-Use development Muscat-Oman



Avani Muscat Hotel & Suites - Muscat Oman



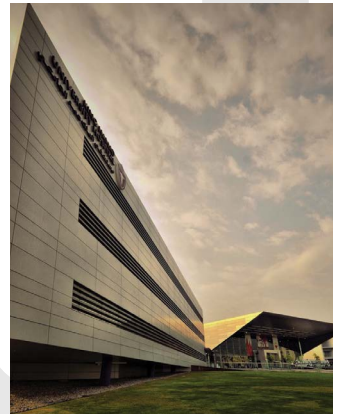
Ministry of Foreign Affairs - Oman



Bahrain Grand Prix



DHL - Bahrain



King Hamad Hospital - Bahrain



S Hotel Manama - Bahrain



Nestle Waters - Bahrain

SEDAR BROCHURE

سیدار
SEDAR

— Since 1892 —